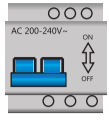


OPTONICA

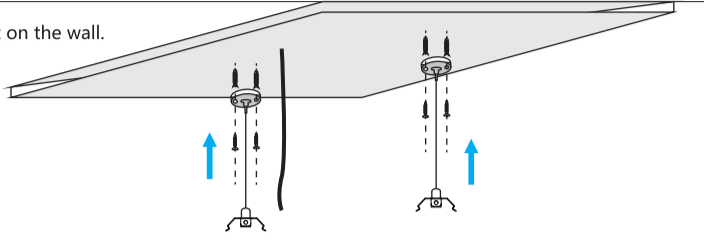
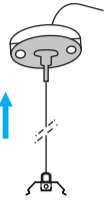
5027,5028,5029,5030,5036,5037,5038,5039,5040,5380,5381,5382
INSTALLATION INSTRUCTIONS

Hoisting mode

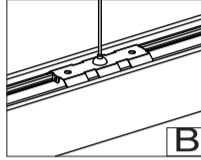
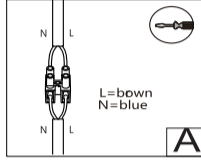
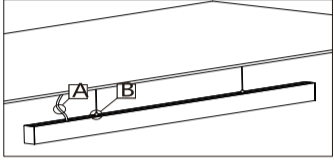


1. Turn off the main power switch

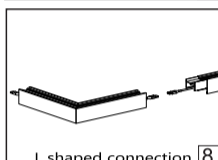
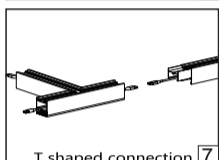
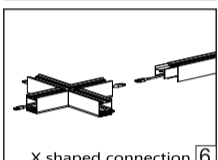
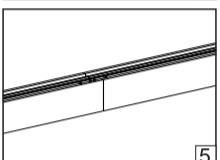
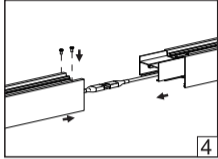
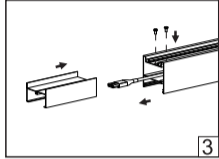
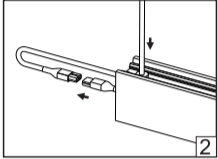
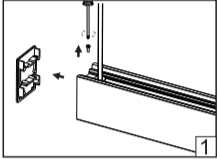
2. Take out the fitting and fix it on the wall.



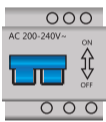
3. Hoisting installation



4. Shaped installation



5. Turn on the main power switch and complete the installation.



Cautions

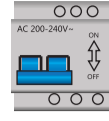
1. Input voltage: 200-240VAC, 50Hz.
2. Maximum rated power for linkable linear light is **1000W**.
3. Please cut off the power before installation, maintenance and replacement.
4. Please do not connect the power before the luminaires have been installed correctly.
5. Please do not install luminaires on any damaged or deformed ceiling.
6. Please cut off the power immediately if any exceptional cases happen, and contact the professional engineer.

IMPORTER: Prima Group 2004 LTD, Bulgaria, 1784 Sofia, Mladost 1, bl. 144, Ground Floor; Phone: +359 2 988 45 72;

OPTONICA

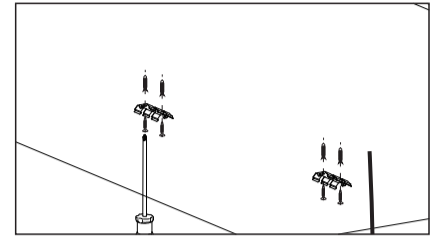
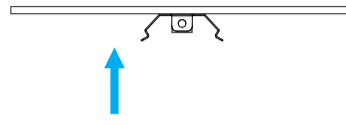
5027,5028,5029,5030,5036,5037,5038,5039,5040,5380,5381,5382
INSTALLATION INSTRUCTIONS

Hoisting mode

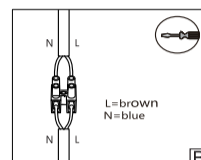
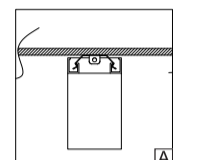
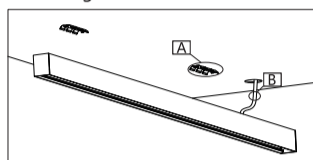


1. Turn off the main power switch

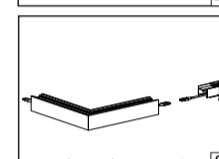
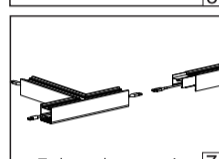
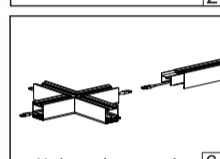
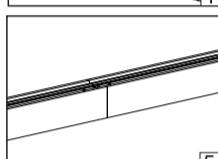
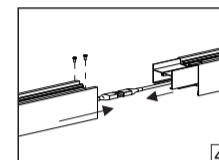
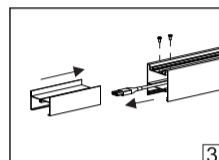
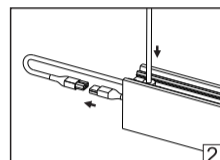
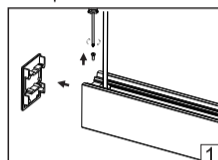
2. Take out the fitting and fix it on the wall.



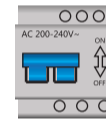
3. Hoisting installation



4. Shaped installation



5. Turn on the main power switch and complete the installation.



Cautions

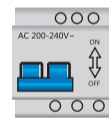
1. Input voltage: 200-240VAC, 50Hz.
2. Maximum rated power for linkable linear light is **1000W**.
3. Please cut off the power before installation, maintenance and replacement.
4. Please do not connect the power before the luminaires have been installed correctly.
5. Please do not install luminaires on any damaged or deformed ceiling.
6. Please cut off the power immediately if any exceptional cases happen, and contact the professional engineer.

IMPORTER: Prima Group 2004 LTD, Bulgaria, 1784 Sofia, Mladost 1, bl. 144, Ground Floor; Phone: +359 2 988 45 72;

OPTONICA

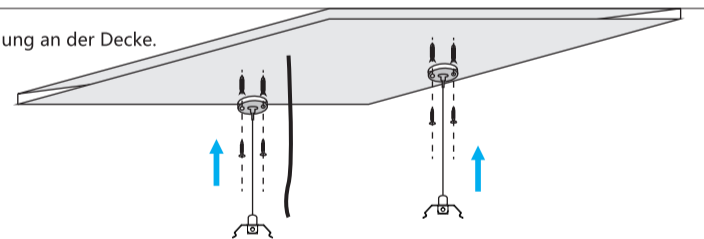
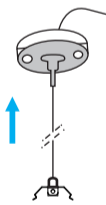
5027, 5028, 5029, 5030, 5036, 5037, 5038, 5039, 5040, 5380, 5381, 5382
INSTALLATIONSANLEITUNG

Hängemodus

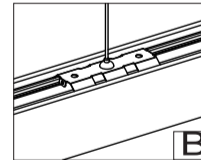
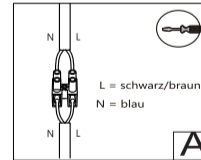
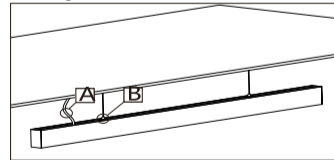


1. Schalten Sie die Stromversorgung aus.

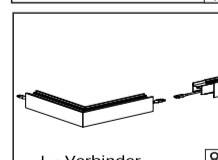
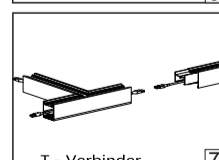
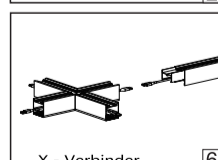
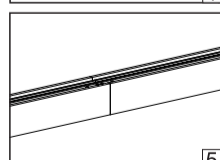
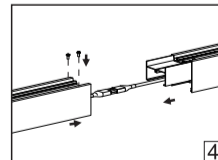
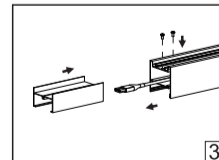
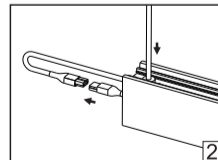
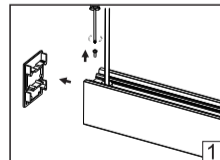
2. Installieren Sie die Befestigung an der Decke.



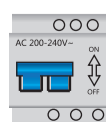
3. Hänge-Installation



4. Einheitlich verbundene Installation



5. Schalten Sie die Stromversorgung wieder ein und schließen Sie die Installation ab.



Hinweise

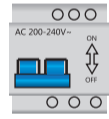
1. Eingangsspannung: 200-240VAC, 50Hz.
2. Die **maximale Leistung** für die verbundene Gesamtinstallation beträgt **1000W**.
3. Bitte unterbrechen Sie die Stromversorgung, bevor Sie das Gerät installieren, warten oder austauschen.
4. Schalten Sie den Strom nicht ein, bevor die Leuchten ordnungsgemäß installiert wurden.
5. Bitte installieren Sie keine Leuchten an beschädigten oder deformierten Decken.
6. Schalten Sie das Gerät im Notfall sofort aus und wenden Sie sich an einen Fachmann.

IMPORTEUR: Prima Group 2004 LTD, Bulgarien, 1784 Sofia, Mladost 1, bl. 144, Erdgeschoss; Telefon: +359 2 988 45 72;

OPTONICA

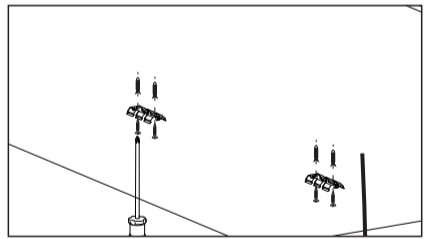
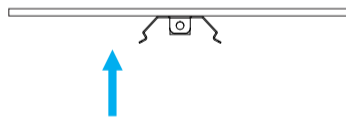
5027,5028,5029,5030,5036,5037,5038,5039,5040,5380,5381,5382
INSTALLATIONSANLEITUNG

Hängemodus

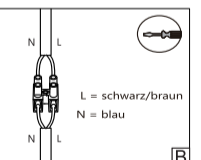
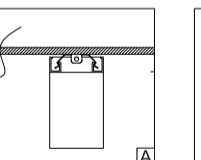
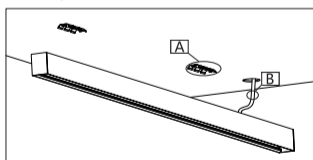


1. Schalten Sie die Stromversorgung aus.

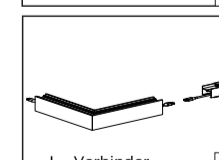
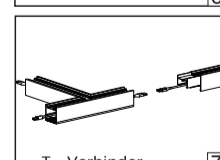
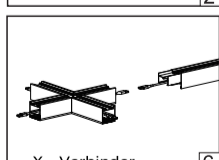
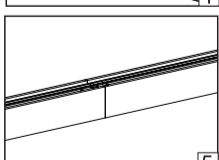
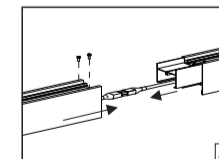
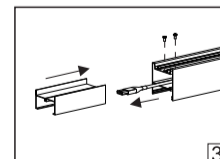
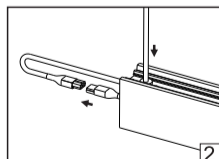
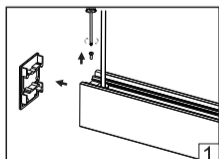
2. Installieren Sie die Befestigung an der Decke.



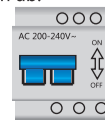
3. Hänge-Installation



4. Einheitlich verbundene Installation



5. Schalten Sie die Stromversorgung wieder ein und schließen Sie die Installation ab.



Hinweise

1. Eingangsspannung: 200-240VAC, 50Hz.
2. Die **maximale Leistung** für die verbundene Gesamtinstallation beträgt **1000W**.
3. Bitte unterbrechen Sie die Stromversorgung, bevor Sie das Gerät installieren, warten oder austauschen.
4. Schalten Sie den Strom nicht ein, bevor die Leuchten ordnungsgemäß installiert wurden.
5. Bitte installieren Sie keine Leuchten an beschädigten oder deformierten Decken.
6. Schalten Sie das Gerät im Notfall sofort aus und wenden Sie sich an einen Fachmann.

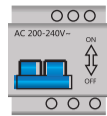
IMPORTEUR: Prima Group 2004 LTD, Bulgarien, 1784 Sofia, Mladost 1, bl. 144, Erdgeschoss; Telefon: +359 2 988 45 72;

OPTONICA

5027,5028,5029,5030,5036,5037,5038,5039,5040,5380,5381,5382

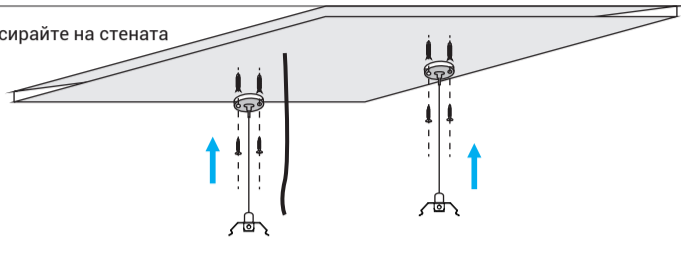
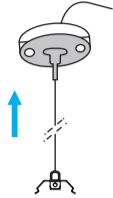
Инструкции за употреба

Начин на закачане

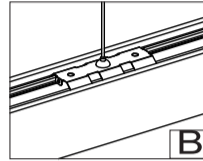
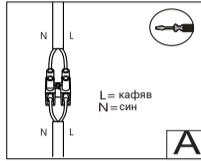
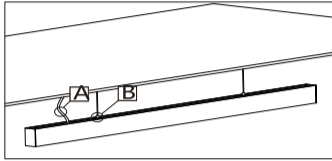


1. Изключете захранването

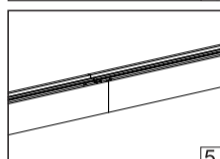
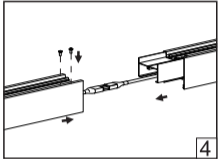
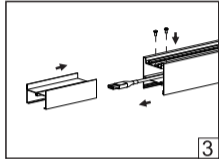
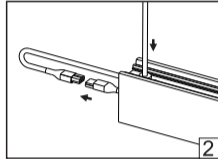
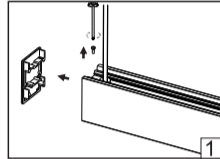
2. Вземете тялото и го фиксирайте на стената



3. Инсталация



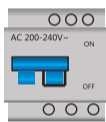
4. Инсталация



5. Включете захранването и завършете инсталацията.

Предпазни мерки

1. Входящо напрежение: 200-240VAC, 50Hz.
2. Максималната допустима мощност за свързващ се линей е 1000W.
3. Моля прекъснете мощността преди инсталация, поддръжка и замяна.
4. Моля не възстановявайте мощността преди да инсталирате правилно телата.
5. Моля не инсталирайте осветлението върху деформиран таван.
6. Моля прекъснете захранването незабавно при извънредна ситуация и се свържете с професионалист.



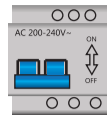
ВНОСИТЕЛ: Прима Груп 2004 ООД, България, 1784 София, Младост 1, бл. 144, Партер; Телефон: +359 2 988 45 72;

OPTONICA

5027,5028,5029,5030,5036,5037,5038,5039,5040,5380,5381,5382

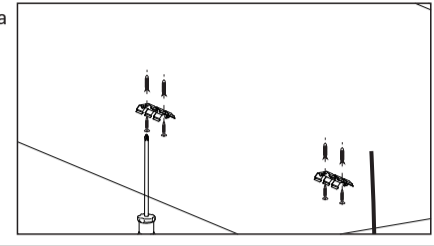
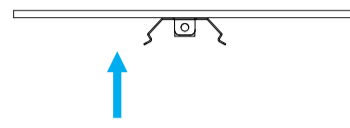
Инструкции за употреба

Начин на закачане

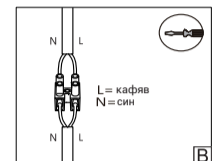
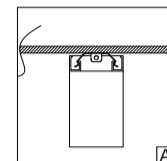
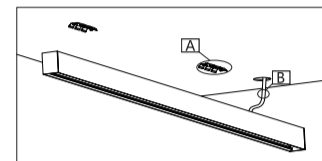


1. Изключете захранването

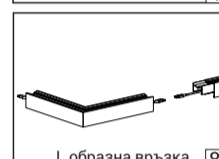
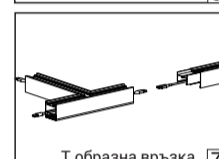
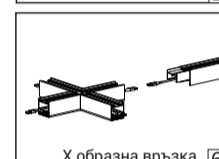
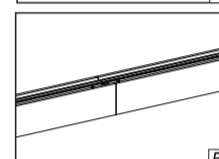
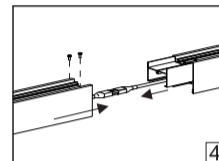
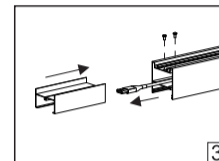
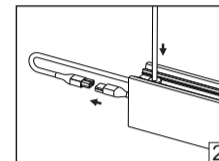
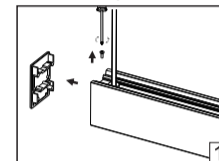
2. Вземете тялото и го фиксирайте на стената



3. Инсталация



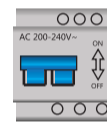
4. Инсталация



5. Включете захранването и завършете инсталацията.

Предпазни мерки

1. Входящо напрежение: 200-240VAC, 50Hz.
2. Максималната допустима мощност за свързващ се линей е 1000W.
3. Моля прекъснете мощността преди инсталация, поддръжка и замяна.
4. Моля не възстановявайте мощността преди да инсталирате правилно телата.
5. Моля не инсталирайте осветлението върху деформиран таван.
6. Моля прекъснете захранването незабавно при извънредна ситуация и се свържете с професионалист.



ВНОСИТЕЛ: Прима Груп 2004 ООД, България, 1784 София, Младост 1, бл. 144, Партер; Телефон: +359 2 988 45 72;